

# WHYALLA STUART PRIMARY SCHOOL R-6



## Whyalla Stuart Primary School

Bastyan Crescent  
Whyalla Stuart SA 5608

Postal Address  
PO Box 2221  
Whyalla Norrie  
SA 5608

Phone 86490450  
Fax 86493051

Email

[dl.0625.info@schools.sa.edu.au](mailto:dl.0625.info@schools.sa.edu.au)

## Dates To Remember

Friday 22nd March  
Assembly hosted by C7

Friday 29th March  
Good Friday (no school)

Monday 1st April  
Easter Monday (no school)

### FROM THE PRINCIPAL

Dear Parents, Caregivers and Families,

The last two weeks have been extremely busy. Finally it appears as though the hot summer weather has left us and it has been much cooler the last few days. Hopefully this means that both students and staff are able to get a much better night's sleep!

I would like to congratulate our Year 3 and Year 5 students who have completed four NAPLAN tests; Writing, Reading, Conventions of Language (spelling and grammar) and Numeracy.

NAPLAN is one assessment tool that is used to determine your child's progress. However, teachers use a variety of other methods including observations, in class work, tests and assignments to measure progress.

NAPLAN results will come out later in the year and if you would like some help understanding the reports or if you have some questions, I am more than happy to meet with you.

Yesterday was the beginning of Harmony Week. This is a week when we celebrate the amazing cultural diversity we have in Australia. Students will be learning about Harmony Week in their classes and share one of the activities they have done at Assembly on Friday.

Once again this year we have been lucky to be part of the Books In Homes program. Students will receive their books next Thursday after listening to a special guest speaker. The Easter Long Weekend will be a great opportunity to lose themselves in a book.

I would like to acknowledge all of the work Ms Polain does to organise specialist sport coaching opportunities and activities in our school. Monday saw the first of four weekly Tennis lessons for our students. By the look of some of the photos it appears they had a great time.

*Jenny MacDonald*



Government of South Australia  
Department for Education



## Media Consent Form

Earlier this week your child would have received a new Media Consent Form.

Once you have completed the new form it will take the place of the old permission form.

This includes the use of likeness, image, voice, performance or creative work of children.

Please note that until we have received your newly completed form, all previous permissions will apply.

## Early Dismissal

The second note that was sent home was an early dismissal form. Can you please ensure that you have returned the form by next Thursday.

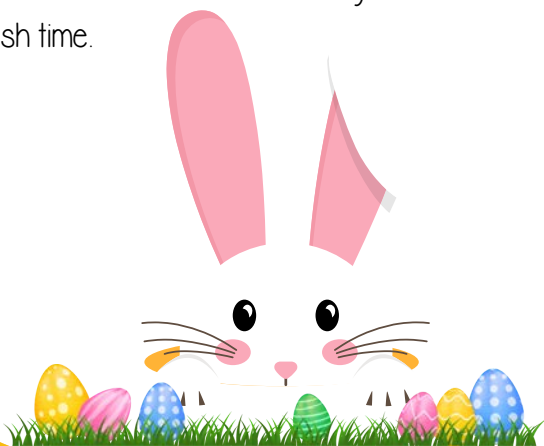
If students have their consent form signed it means they will be dismissed from school next Thursday at 2:15pm instead of 3:15pm.

Hopefully this early dismissal will help families who may be travelling for Easter.

This form also covers the end of term dismissal at 2:15pm.

Students who travel to school on the school bus, will still go home on the bus, but they will arrive home an hour earlier.

For those students catching the Iron Knob Bus Service, I will contact Des's Cabs to ensure they are aware of the early finish time.



## School Fees

Statements with school fees were sent out in Week 3. You will notice that the government rebate of \$100 has already been applied. If you are eligible for School Card please see information below on how to apply.

School Card is available in government schools to: families with children aged 4 years and over who attend a school full time.

To qualify, your family's gross income in the 2022/23 financial year must be below the threshold, based on the number of dependent children you have in your family.

Information on the eligibility criteria, income limits and the application process is available on

[www.sa.gov.au/education/schoolcard](http://www.sa.gov.au/education/schoolcard).

School Card Applications can be completed online or you can come in to school and ask for a form.



All types of School Card applications **are now online.**

You can access the online forms from any device that gets internet, including mobile devices, such as tablets and smart phones, as well as laptops and computers.

Applying online is easy! Simply follow the steps below.

- STEP 1** Visit [sa.gov.au/education/schoolcard](http://sa.gov.au/education/schoolcard)
- STEP 2** Select the type of School Card you would like to apply for (for example 'Type A') and follow the prompts.
- STEP 3** Complete all mandatory fields.  
Please note: you cannot submit your application unless all mandatory fields are complete.
- STEP 4** Once you have completed a page click on the 'NEXT' button.
- STEP 5** Once you have filled out all pages click the 'SUBMIT' button.  
Please note: if you exit the form without clicking 'SUBMIT' your details will be lost.

You can save the form, and return to complete it at another time, by clicking on the 'SAVE' button.

 [sa.gov.au/education/schoolcard](http://sa.gov.au/education/schoolcard)



Government of South Australia  
Department for Education



## The Smith Family

The Smith Family in conjunction with Nunyara Aboriginal Health Service will be holding a BBQ and chat opportunity tomorrow, Friday 22nd March from 10:30am-12:30pm at Nunyara.

It would be a great opportunity to go along and see what supports are available for your children.

**NUNYARA**  
ABORIGINAL HEALTH SERVICE INC.



Learn today, change tomorrow.

Would like to invite you to our joint BBQ and Chat Opportunity on

**FRIDAY 22nd March 2024**

**10.30am-12.30pm**

**Nunyara, 17-23 Tully St-Whyalla Stuart**

Come along, meet the staff and enjoy a FREE sausage sizzle!

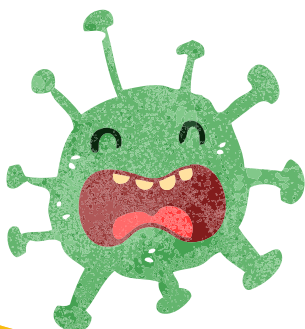
## Student Illness

We still have quite a bit of illness travelling through the school. Some of our students have had COVID, gastro and generally been feeling unwell.

Due to the highly contagious nature of gastro it is recommended by Health Direct Australia that children do not return to school until 48 hours after the last episode of diarrhoea and/or vomiting.

Similarity with COVID, students should not return to school until they are not symptomatic.

Please work with us to help stop the spread of these nasty bugs.



## Baker's Delight

We are extremely fortunate to have the support of some wonderful businesses in Whyalla.

I would like to take this opportunity to thank Baker's Delight for their ongoing support through the donation of bread, rolls and buns to support our emergency lunch program.

I would also like to thank Mrs Cowan who goes there every Sunday night to collect the goods for our school.



Government of South Australia  
Department for Education





# Tennis with B3



Students in B3  
had a fantastic  
time learning new  
skills during their  
first tennis  
session.

